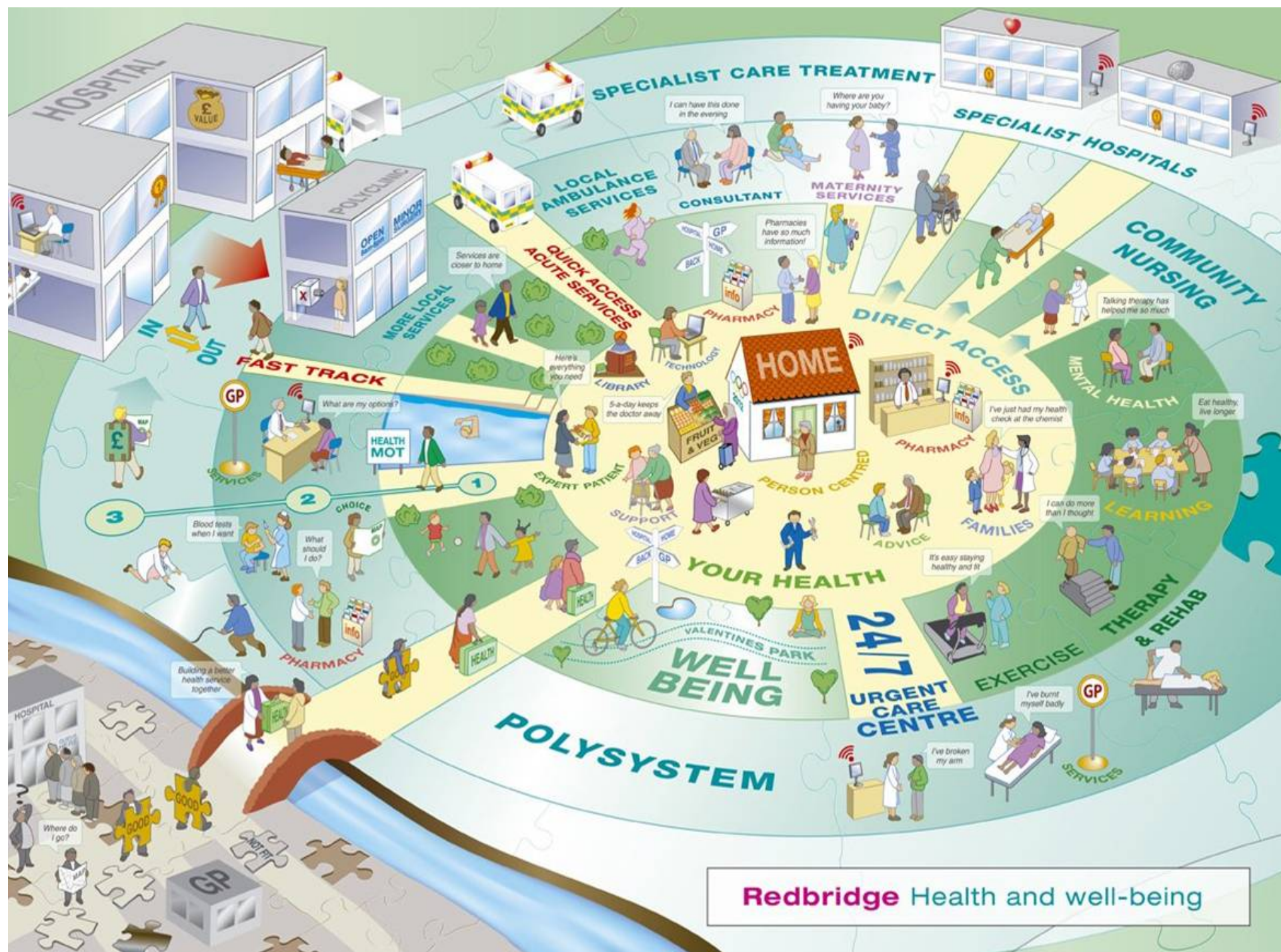


PolySystem a model for integrated Clinical Commissioning

Heather O'Meara
Chief Executive Officer
October 09

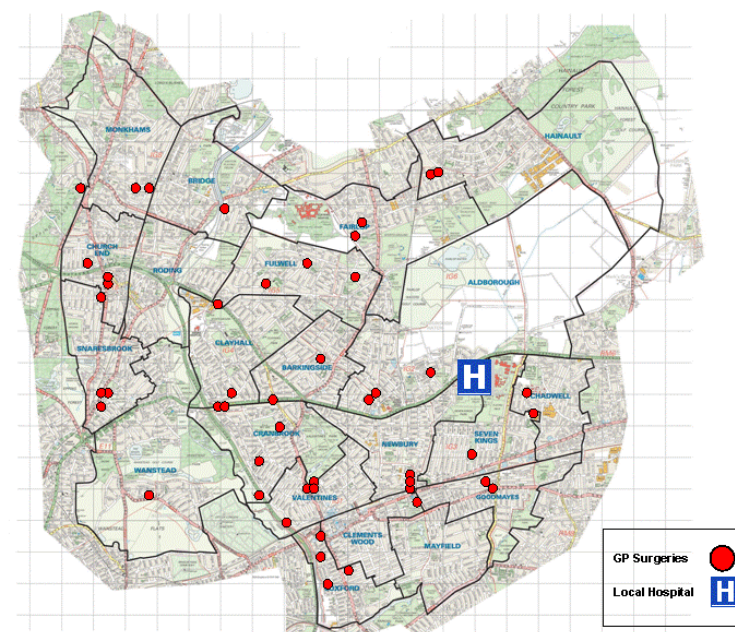
Talk to us today about
Redbridge healthcare services
on **0800 0926 995** or visit
www.redbridgepct.nhs.uk

Doctors | Dentists | Physiotherapy | Blood testing | Health centres | Urgent care | Diabetes care | Sexual health
Podiatry | Patient advice | Nutrition | Health visitors | Speech and language therapy | Cancer screening
Immunisations | Family planning | School nurses | Palliative care | Smoking cessation | Children's services



The Landscape

- 50+ GP practices
- 40+ Community Pharmacists
- 300+ Primary Care Professionals
- 2 Large Acute and 1 large mental health Trusts
- Range of community providers
- Voluntary Sector
- Community & Public
- Diverse Politically
- PolyPlan Events 1 - 4



PolyPlan Events: Dec 07- Nov 08

Key Recommendations:

- Establish 5 'PolySystems'
- Develop Governance and Plan
- Community Pharmacy Commissioning
- Vertically Integrate.....



Redbridge **NHS**
Primary Care Trust

PolyPlan1

Report from the first Polyclinic
development event in the Redbridge
Health System

December 2007



Redbridge **NHS**
Primary Care Trust

PolyPlan2

The development of Polysystems
Redbridge

June 2008



Redbridge **NHS**
Primary Care Trust

PolyPlan3

The development of Polysystems in
Redbridge

July 2008

PolyPlan4

The development of Polysystems in
Redbridge

November 2008



As an integrated local healthcare delivery network 'PolySystems' will:

Promote the health & wellbeing of all people in the local community

Achieving improved health outcomes overall and for specific communities e.g.

- **Childhood obesity**
- **Teenage conception**
- **Physical activity**

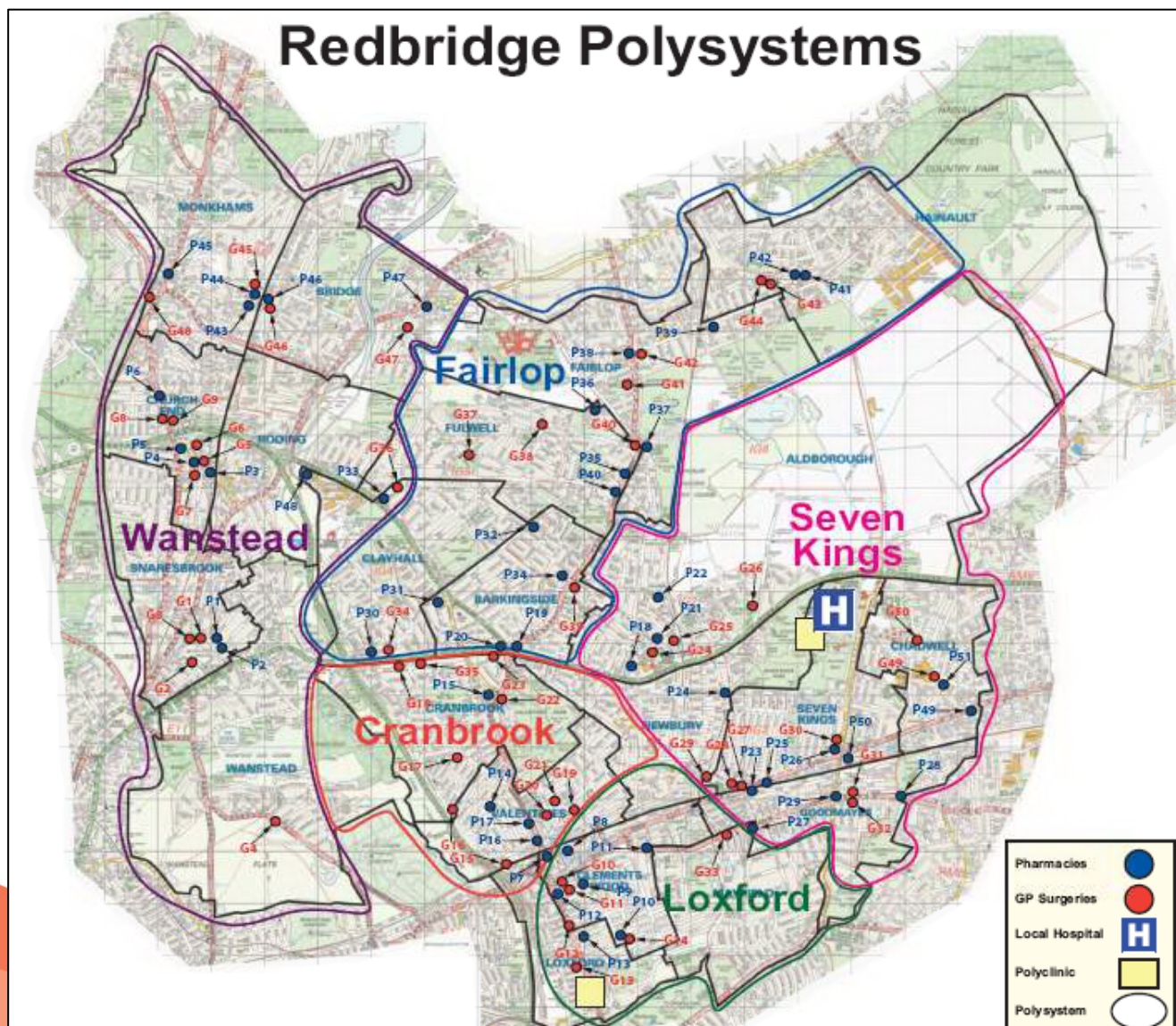
Maximise Independence & quality of life for people with long-term needs

- **Reduce emergency admissions**
- **Care Navigation & Coaching**
- **Improved care coordination & management**
- **Better quality of life measures**
- **Reduced cost per head**

Improve service for people with non-critical acute care needs

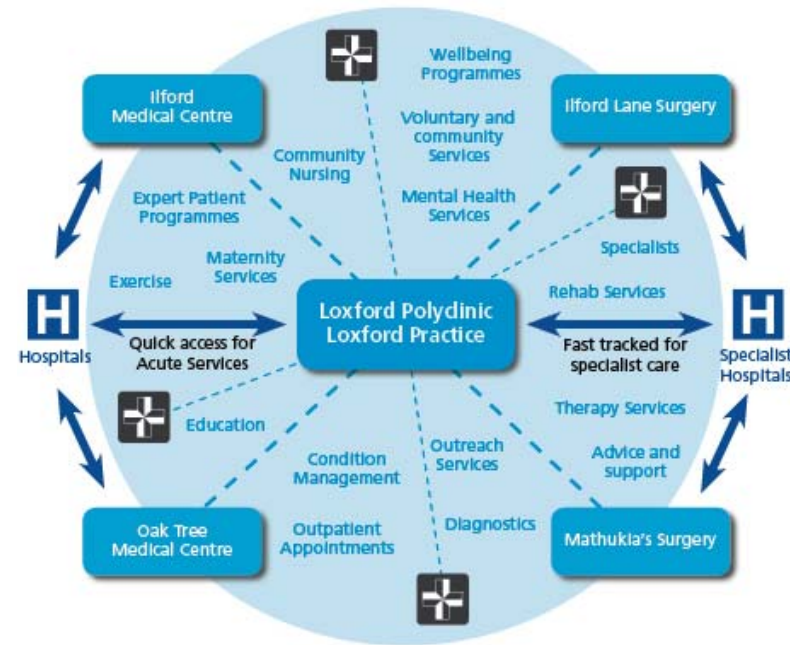
- **Reduced waiting RTT**
- **Improved patient satisfaction**
- **Better value for money**
- **Increased Access**

PolySystems Development



PolySystems – How they will work...

- Integrated -Commissioning and Delivery
- Led by Clinical Director
- Commissioning Primary and Community
- Accountable for Quality and Productivity
- Agreeing local estate strategy
- Brings together all providers
- Integrated IT
- Community Engagement
- Senior Management Support

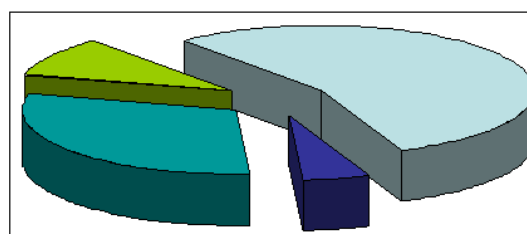


Incentives and Performance

Polysystem Commissioning

09/10 Goals & Payment Scheme

Future Savings Split three Ways



- 5% Cash to GP practice
- 10% Polysystem bonus to GP Practices
- 55% Polysystem Investment
- 30% NHS Redbridge

PolySystem 'A' – worked example

GPs	Practice population	Actual Referrals	Referral ratio (practice population)	Reduction (referrals)			Savings (referrals)		
				Mean	Mean minus 1 SD	Mean minus 2 SD	Mean	Mean minus 1 SD	Mean minus 2 SD
GP A	5932	2551	43%	1976	1613	1250	575	938	1301
GP B	8592	2613	30%	2863	2337	1810	-260	276	803
GP C	5571	1499	27%	1856	1515	1174	-357	-16	325
GP D	6784	2388	35%	2280	1845	1429	108	523	939
GP E	4897	1608	37%	1465	1196	926	149	412	682
GP F	10270	4228	41%	3422	2793	2164	806	1435	2064
GP H	1963	481	25%	654	534	414	-173	-53	67
GP I	4025	1388	34%	1341	1095	848	-47	293	540
GP J	6606	1785	27%	2201	1796	1392	-416	-11	393
Total	54140						482	3798	7114
mean	6016		33.32%	Poly-system savings			£72,347	£569,728	£1,067,108



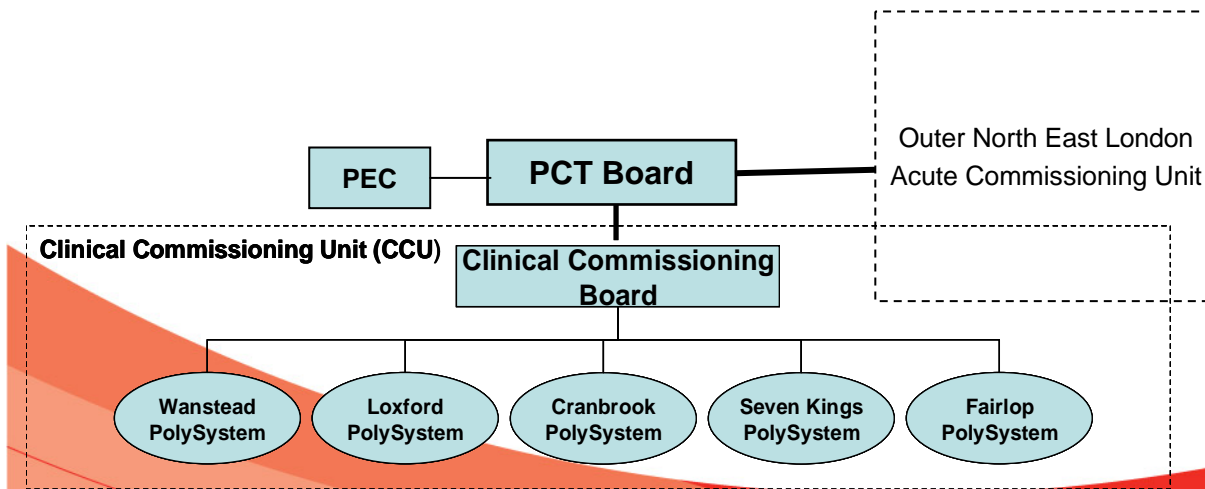
Denotes referral rates under the mean referral rate



Denotes referral rates over the mean referral rate

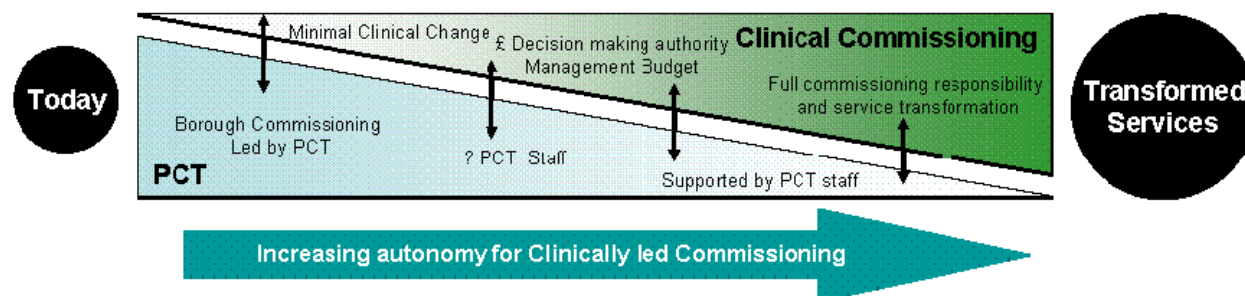
Clinical Commissioning - Governance

- Boroughwide Clinical Commissioning Board
- Clinical leadership team and self-monitored
- Accountability for PolySystem effectiveness
- Responsible for Pathway Development
- Partner relationship with PCT



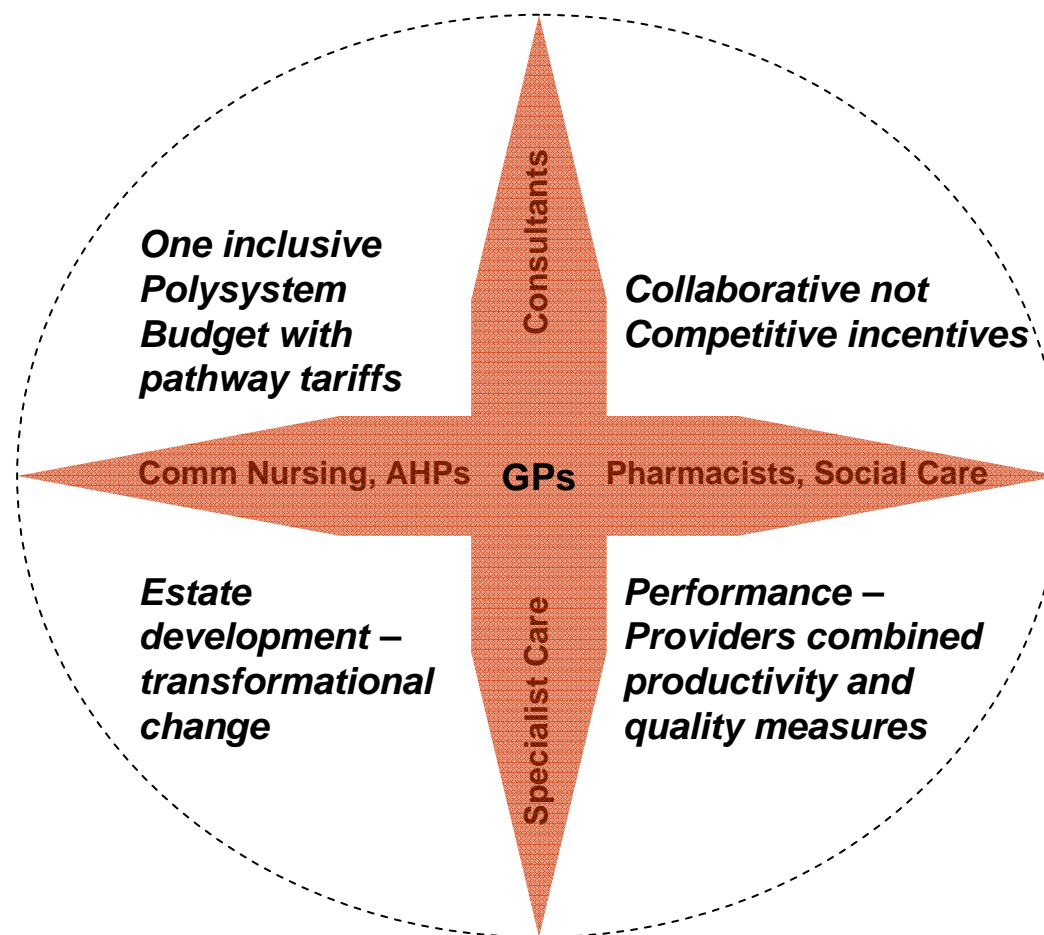
Integrating Design & Delivery

- PolySystems are the ‘engine’ which drives local change to meet the wider health and healthcare needs of its community.
- PolySystems are accountable for the delivery of high quality and productive services.
- PolySystems are held accountable for delivery and in return will be resourced and supported appropriately to enable change to happen.



“PolySystems will only achieve their full potential if they bring together primary and secondary clinicians to innovate by designing and delivering care models that enable system change.”

Delivering Integrated Care.....



.....Horizontal and Vertical