

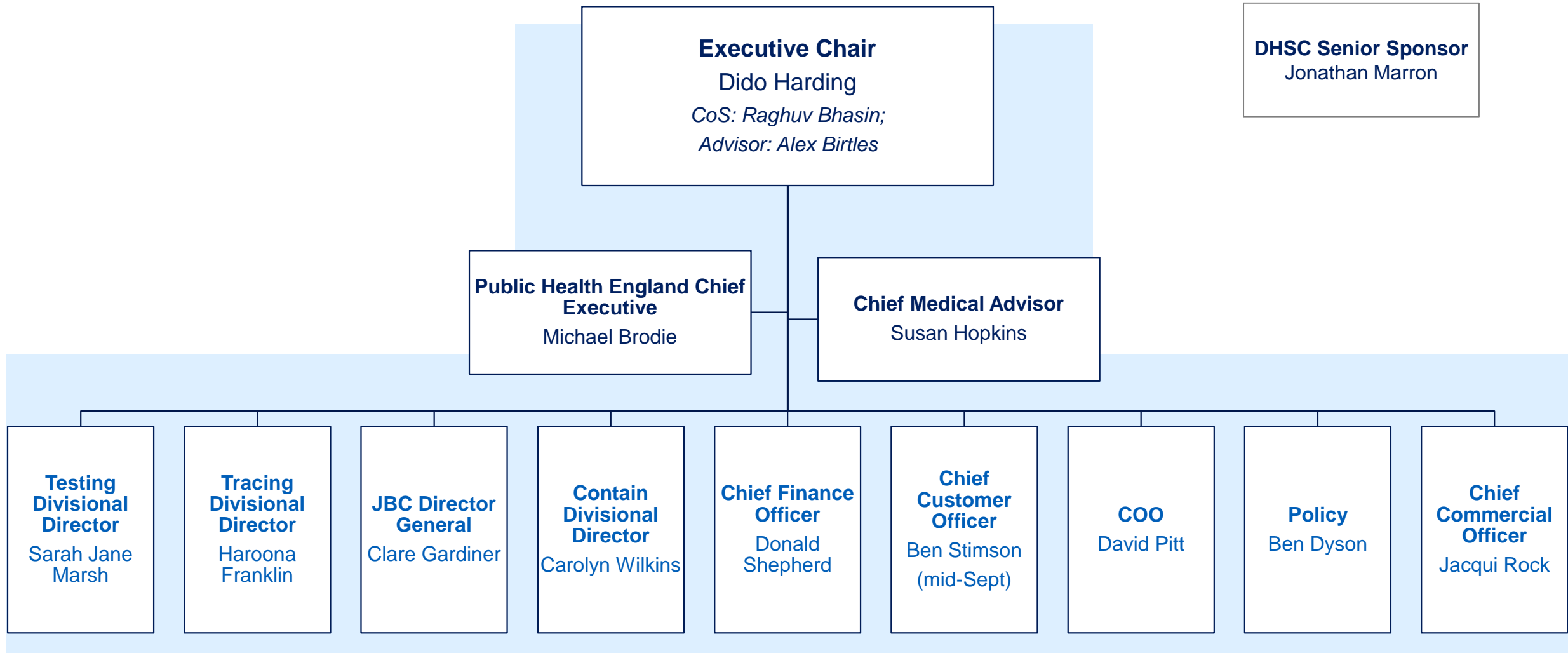
---

# NHS Test and Trace

## Organisation Chart

As of 04/09/2020

# Org Chart | Dido Harding direct reports



# COVID-19 Executive Committee

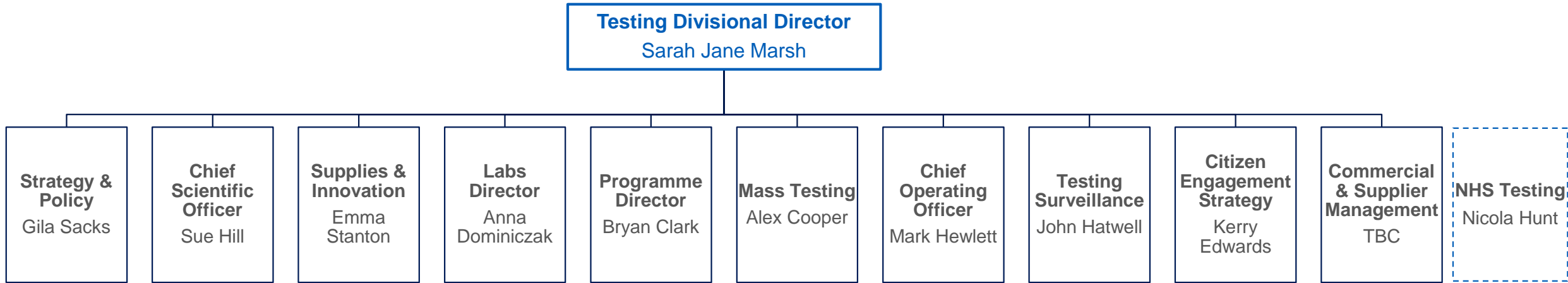
- Dido Harding (Chair)
- David Pitt – Chief Operating Officer
- Sarah-Jane Marsh – Testing Divisional Director
- Haroona Franklin – Tracing Divisional Director
- Carolyn Wilkins – Contain Divisional Director
- Clare Gardiner – JBC Director General
- Simon Bolton – Chief Information Officer
- Gareth Williams – Chief People Officer
- Donald Shepherd – Chief Financial Officer
- Ben Dyson – Director of Policy
- Susan Hopkins – Chief Medical Adviser
- Jacqui Rock – Chief Commercial Officer
- Ben Stimson – Chief Customer Officer
- Raghuv Bhasin – Chief of Staff
- Michael Brodie – Chief Executive, Public Health England

---

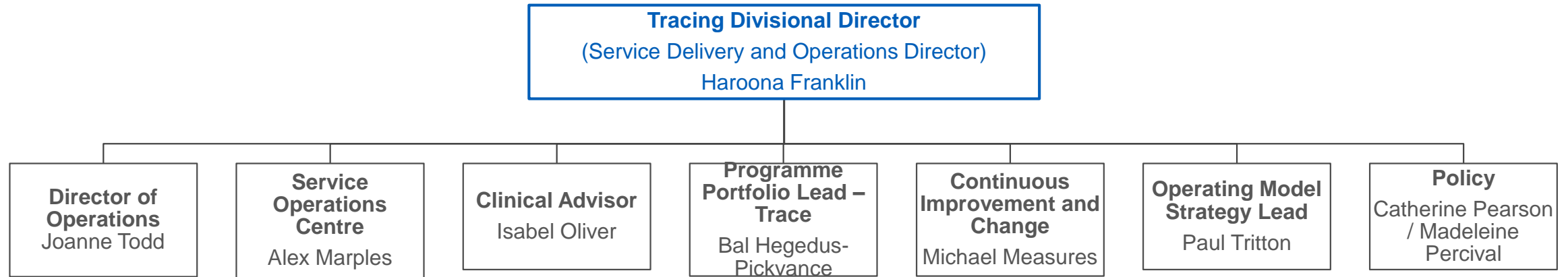
# Section 1: Wider Leadership Team

As of 04/09/2020

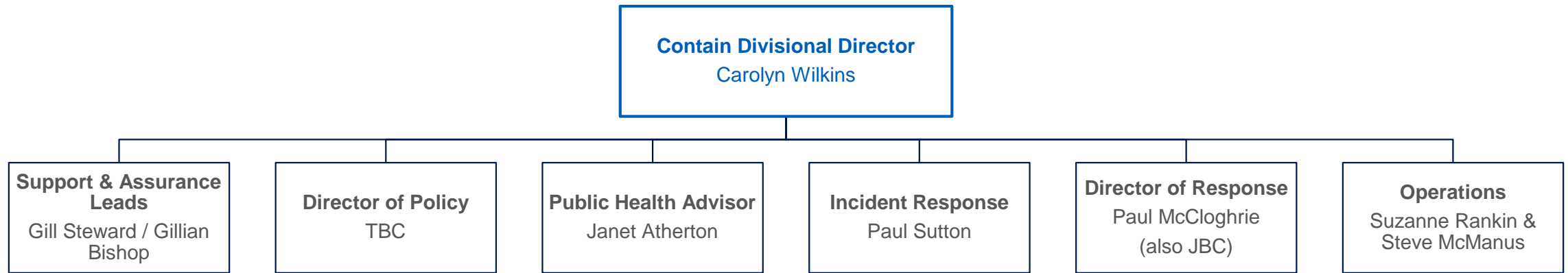
# Org Chart | Testing



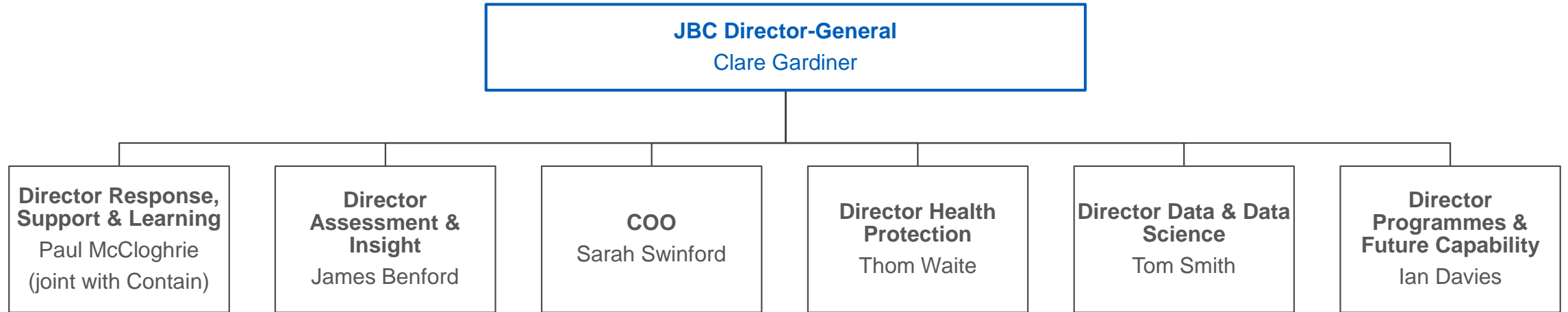
# Org Chart | Tracing



# Org Chart | Contain

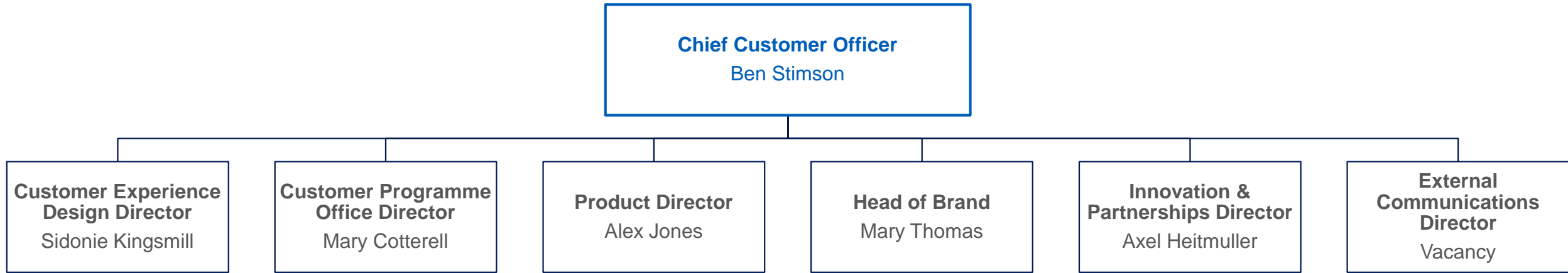


# Org Chart | JBC

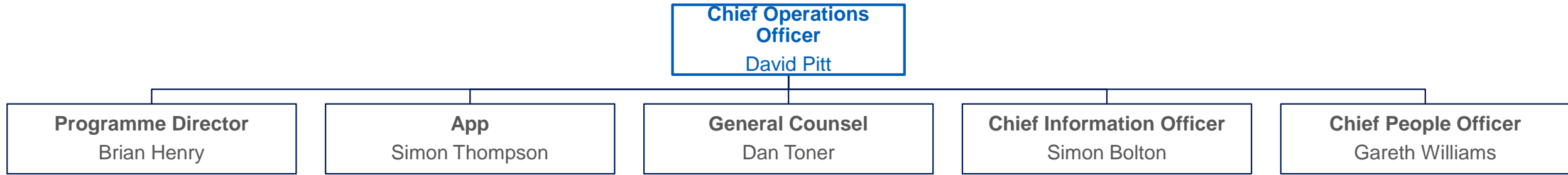




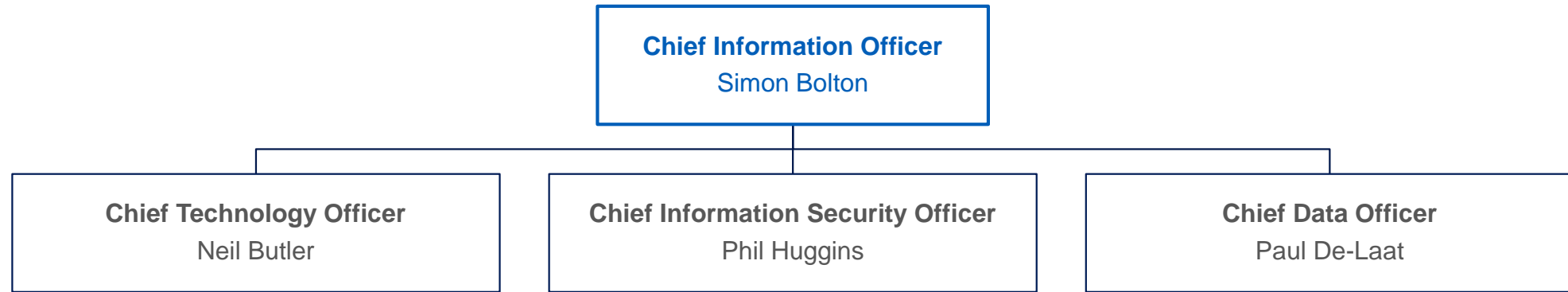
# Org Chart | Customer



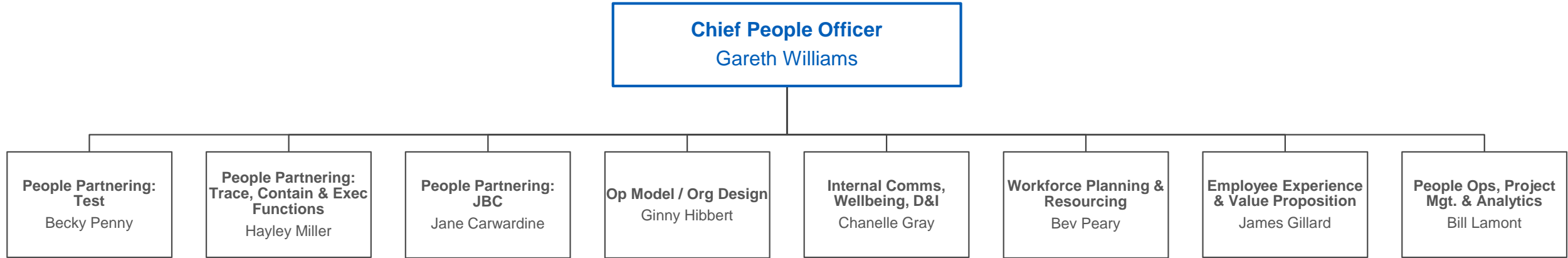
# Org Chart | Operations



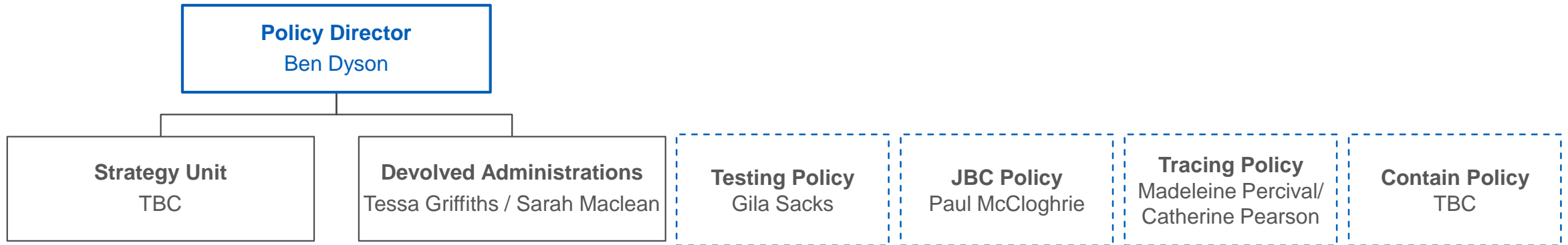
# Org Chart | Information



# Org Chart | People



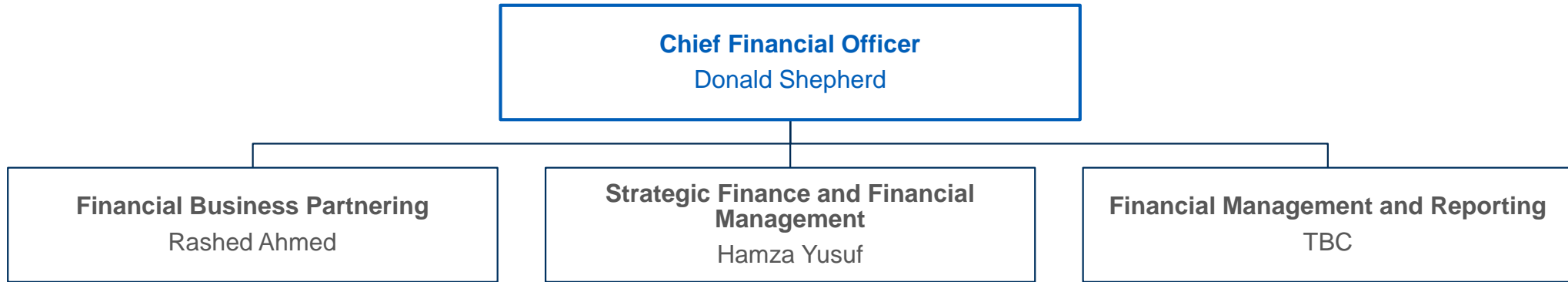
# Org Chart | Policy



# Org Chart | Commercial



# Org Chart | Finance



# Org Chart | Medical Advisor

