

West Cumberland Hospital

Newsletter 8
April/May 2011



Celebrating the redevelopment of your hospital in West Cumbria

CONTENTS

• Page 2

Plans are taking shape

Where our new services will be:
A & E, Emergency Care, Outpatients

• Page 3

Replacement of Yewdale

Where our new services will be:
Family Services, Theatres and Wards

• Page 4

News from Cumbria LinK
How to get involved

NEWS IN BRIEF

GPs and hospital doctors give their commitment to the redevelopment in a new Clinical Strategy

Clinical strategy agreed for north Cumbria

Senior clinicians from North Cumbria University Hospitals NHS Trust have been working closely with the new GP commissioners over the last six months to develop a Clinical Strategy for north Cumbria.

A draft of the Clinical Strategy has been published and includes a commitment to the new West Cumberland Hospital which clinicians want to develop into a hospital of choice for patients undergoing planned operations from across Cumbria and other parts of the region.



Working together Medical Directors Mike Bewick, of NHS Cumbria, and Mike Walker, North Cumbria University Hospitals NHS

Mike Walker, consultant surgeon and Medical Director at North Cumbria University Hospitals Trust, said: "This strategy is the fruit of a lot of very good work between hospital doctors and GPs to set out the sort of services we need in north Cumbria to give patients the very best that modern medicine can offer."

With the support of NHS North West, the Clinical Strategy will now be assessed by independent health economists to make sure it is affordable and achieves the efficiencies the whole NHS is being asked to make over the next four years. It will also form part of the Full Business Case for the new West Cumberland Hospital which regional health managers will be reviewing in the coming months following approval by the North Cumbria University Hospital NHS Trust Board.

Importantly, the strategy reaffirms the commitment of the commissioning GPs to consultant-led Maternity and Obstetric Services and Emergency services at West Cumberland Hospital – a key component of the original Closer to Home plans.

The redevelopment of West Cumberland Hospital signals the single biggest investment into the health care of West Cumbria for over half-a-century



The plans take shape

Everyone will be aware that the New Hospital Project Team, along with clinical users and architects, have had to review the plans for the new hospital following the loss of a £10 million contribution from the NWDA last year. This has meant that the new hospital now needs to be delivered within a budget of £90 million rather than £100 million. 10% of the total funding is a significant amount, so everyone has had to think of new ways of working to get the best out of the facilities we can afford to provide.

Some compromises have had to be made, most notably that we are now having to retain some of our inpatient beds within the existing buildings. However, we have continued to ensure that the total number of beds in the redeveloped hospital will be in line with the commitments made



An artist's impression of the main entrance of the new West Cumberland Hospital

in Closer to Home. The process, whilst it has not been easy, has also had a number of benefits.

In the new plans, the whole of Family Services (maternity and children's services) is now to be provided within the main hospital building, largely within new build accommodation.

This provides much better and more efficient facilities for patients and staff, and will also allow the

demolition of the old Maternity Unit.

We will be signing off the new drawings in May, and everyone who has contributed to this achievement has done a fantastic job. Level 3 and Level 4 are the parts of the new hospital containing the majority of the clinical services which our patients will use. Read more about what they will house and what they will look like, below.

Level 3 – Emergency Floor, Outpatients and more

On Level 3 will be the main public entrance, and this level also houses the Urgent Care facilities and the Medical Investigations areas.

Services on Level 3 include: an Emergency Floor, Acute Admissions, CCU, Critical Care beds, Radiology, Outpatients Department, Ophthalmology, Endoscopy, Dental and Orthodontics and Minor Operations. The Emergency Floor is also integrated with the out-of-hours GP services provided by CHOC (Cumbria Health on Call). Access and



An artist's impression of a single en-suite bedroom in the new hospital

drop off parking for the A&E is at the rear of the building.

The flow for Urgent Care is designed to require minimal distances of travel for acutely-ill patients and also has direct access to lifts to access the wards and theatre suite upstairs on Level 4. Also on Level 3 there will be a shop, access to spiritual care together with a café and restaurant.

All patient and public zones will be accessible from the main 'hospital street' and will be well signposted, providing ease of access for patients, relatives and carers and hospital staff between the different zones.

Replacement of Yewdale Ward

Detailed planning work has been underway for some time now to enable the inpatient mental health services currently provided by Cumbria Partnership NHS Foundation Trust in Yewdale Ward to be relocated on site at WCH. This is an essential final step in clearing the areas of the site needed to house the new hospital build.

The plan is for inpatient mental health services to move into refurbished accommodation within the existing J Block at WCH, which currently houses the Ullswater stroke unit and a number of other services.

Making space for the relocation from Yewdale Ward has proved a challenge and has required



Work underway to prepare Gable Ward for the arrival of stroke patients

decanting plan involving a number of service moves around the site. The following clinical service moves are to

take place in the near future in order to free up J Block:

- Transfer of Stroke beds from Ullswater Ward to Gable Ward.
- Transfer Neuro-Rehab Physiotherapy from Ullswater Ward to the main Therapies Department on Level 4
- Transfer Diabetes Service and Retinal Screening Service from J Block to new accommodation in the Upper Staff Hostel

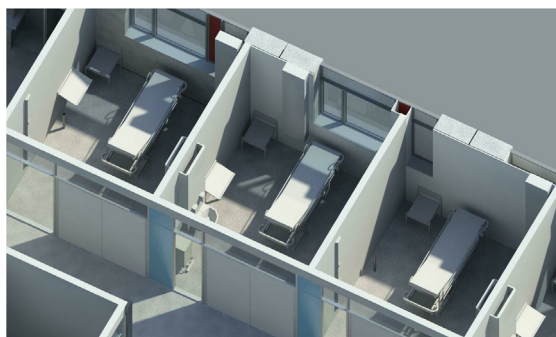
These moves will allow J Block to be vacated and works to commence on refurbishing this building to provide 16 new inpatient mental health beds and supporting facilities to replace Yewdale Ward. Design work for the new ward is well underway.

Level 4 – Family Services, theatres and wards

Level 4 provides ward accommodation, Family Services facilities and operating theatres.

It will be the first time that we have had all of our operating theatres at West Cumberland Hospital in one place, and one of the benefits of the revised design is that the Maternity theatre will also now be in the same block. This enables the theatre, anaesthetics and delivery teams to function in different ways, providing good quality services that are at the same time, much more efficient.

The theatre suite incorporates day case cabins (single rooms), where patients having a day procedure will attend. Patients will go from



More artists' impressions, floor plans and 3D drawings can be viewed online at www.buildingyourhospital.ncuh.nhs.uk

Left, an artist's impression of day case facilities

their single room straight to the theatre and will then be recovered in the same area. This means that admission to a ward is not required for most day patients. The theatres are linked directly to wards housing single en-suite rooms. Surgical inpatients will be accommodated in the beds that are nearest to the operating theatres.

The new Family Services facilities are also located on

Level 4, with the Delivery Suite being directly adjacent to the operating theatres. The unit follows through to the Special Care Baby Unit and then onwards into Paediatrics areas. Immediately adjacent is the Maternity ward and Women's outpatient facilities.

Level 4 of the existing building currently occupied by Therapy staff will remain, and will continue to provide therapy services in the new hospital.

News from Local Involvement Network

Local Involvement Networks (LINKs) were set up in April 2008 to give local people a stronger voice in how their health and social care services are delivered. Cumbria LINK has been working closely with our Project Office and is involved in the plans for the redevelopment of the hospital.

Since the redevelopment of the hospital was announced, Cumbria LINK have produced

two reports – one as a result of focus group sessions with representatives from community groups and the second after interviewing hospital patients, focussing on the impact of building operations.

Both reports can be read at www.buildingyourhospital.ncuh.nhs.uk/get-involved/index.aspx under the heading 'Public engagement'. Find out more at www.cumbrialink.org.uk/



How to get involved



Check out our dedicated website where we post all the latest redevelopment news: www.buildingyourhospital.ncuh.nhs.uk



You can post any questions concerning the redevelopment to our dedicated email address wchproject@ncuh.nhs.uk and any issues relating to the new hospital will be passed to the Project Team for consideration



Write to the New Hospital Project Office, West Cumberland Hospital, Hensingham, Whitehaven CA28 8JG or call 01946 693181 and ask for the New Hospital Project Office



Pop into the Project Office, located opposite WH Smith in the main entrance to West Cumberland Hospital

If you would like to receive future issues of the West Cumberland Hospital newsletter by email, please email wchproject@ncuh.nhs.uk or fill in this form and either:

1) post it to New Hospital Project Office, West Cumberland Hospital, Hensingham, Whitehaven CA28 8JG

or 2) post it in the comment box in the main foyer at West Cumberland Hospital

NAME: EMAIL:

ANY HELPFUL COMMENTS ON THE HOSPITAL REDEVELOPMENT?

.....
.....
.....
.....
.....