

# **Maternity Performance Report**

**March 2012**

# Maternity Performance Scorecard

Ref	Metric	Actual												Cumulative YTD	Year end risk rating
		Apr	May	Jun	Jul	Aug	Sep	Oct	Nov	Dec	Jan	Feb	Mar		

## 12-Week Assessment

MY01	% Booked by 12 weeks + 6 days	Actual	72.2%	70.7%	69.9%	75.2%	74.0%	73.0%	77.5%	82.3%	74.4%	77.7%	79.1%	75.0%	75.0%	
		Target	90%	90%	90%	90%	90%	90%	90%	90%	90%	90%	90%	90%	90%	

## Antenatal Screening

MY02	% Screening for haemoglobinopathies offered	Actual	100.0%	100.0%	100.0%	100.0%	100.0%	100.0%	100.0%	100.0%	100.0%	100.0%	100.0%	100.0%	100.0%	
		Target	100%	100%	100%	100%	100%	100%	100%	100%	100%	100%	100%	100%	100%	
MY03	% Screening for haemoglobinopathies uptake	Actual	98.9%	99.7%	99.1%	99.0%	99.0%	99.6%	99.6%	99.0%	98.0%	99.3%	98.4%	99.7%	99.1%	
		Target	95%	95%	95%	95%	95%	95%	95%	95%	95%	95%	95%	95%	95%	
MY04	% Timeliness of test for haemoglobinopathies (10+ weeks)	Actual	46.5%	42.2%	38.9%	53.2%	54.3%	48.6%	52.8%	47.9%	46.2%	47.8%	49.4%	46.8%	47.9%	
		Target	50%	50%	50%	50%	50%	50%	50%	50%	50%	50%	50%	50%	50%	
MY05	% Screening for Down's syndrome offered	Actual	86.4%	89.1%	86.9%	88.2%	89.0%	92.6%	89.4%	99.1%	98.1%	99.0%	95.0%	91.3%	92.0%	
		Target	100%	100%	100%	100%	100%	100%	100%	100%	100%	100%	100%	100%	100%	
MY06	% Screening for Down's syndrome uptake (2 months in arrears)	Actual	70.0%	82.2%	80.8%	75.8%	81.4%	72.6%	81.8%	79.2%	77.2%	76.9%			77.8%	
		Target	80%	80%	80%	80%	80%	80%	80%	80%	80%	80%			80%	
MY07	% Completion of laboratory forms for Down's Syndrome (Qtrly)	Actual	93.5%			96.7%			94.4%			Data not currently available			94.9%	
		Target	97%			97%			97%			97%			97%	
MY08	% USS screening for structural anomalies offered	Actual	100.0%	100.0%	100.0%	100.0%	100.0%	100.0%	100.0%	100.0%	100.0%	100.0%	100.0%	100.0%	100.0%	
		Target	100%	100%	100%	100%	100%	100%	100%	100%	100%	100%	100%	100%	100%	
MY09	% USS screening for structural anomalies uptake	Actual	94.8%	96.4%	96.6%	96.8%	96.0%	94.5%	97.7%	99.5%	98.1%	96.2%	95.8%	98.0%	96.7%	
		Target	90%	90%	90%	90%	90%	90%	90%	90%	90%	90%	90%	90%	90%	
MY10	% Screening for infections offered (HIV, Hep.B, Syphilis & Rubella)	Actual	100.0%	100.0%	100.0%	100.0%	100.0%	100.0%	100.0%	100.0%	100.0%	100.0%	100.0%	100.0%	100.0%	
		Target	100%	100%	100%	100%	100%	100%	100%	100%	100%	100%	100%	100%	100%	
MY11	% Screening for infections uptake	Actual	98.5%	99.1%	98.0%	99.3%	99.6%	99.3%	100.0%	98.7%	96.5%	98.7%	99.4%	99.7%	98.9%	
		Target	90%	90%	90%	90%	90%	90%	90%	90%	90%	90%	90%	90%	90%	

## 1:1 Care In Labour

MY12	Audit of Ratio of Midwives to Women in labour	Actual	Data not available			92.8%	93.3%	96.0%	99.3%	97.8%	100.0%	100.0%	100.0%	99.3%	97.6%	
		Target	100%	100%	100%	100%	100%	100%	100%	100%	100%	100%	100%	100%	100%	

Month 12 - April 2011 to March 2012

# Maternity Performance Scorecard

Ref	Metric		Actual												Cumulative YTD	Year end risk rating
			Apr	May	Jun	Jul	Aug	Sep	Oct	Nov	Dec	Jan	Feb	Mar		
Type of Birth																
MY13	% Caesarean Section (C/S)	Actual	31.8%	25.4%	25.8%	28.7%	27.1%	29.6%	30.4%	31.2%	28.3%	25.7%	32.7%	36.9%	29.4%	
		Target	26%	26%	26%	26%	26%	26%	26%	26%	26%	26%	26%	26%		
MY14	% of Emergency C/S	Actual	20.2%	17.8%	14.9%	17.6%	16.4%	19.8%	16.0%	21.6%	17.6%	15.7%	25.5%	24.6%	19.0%	
		Target	No target set													
MY15	% of Elective / Planned C/S	Actual	11.6%	7.6%	10.9%	11.1%	10.7%	9.7%	14.4%	9.5%	10.7%	10.0%	7.3%	12.3%	10.5%	
		Target	No target set													
MY16	% Normal deliveries	Actual	53.5%	62.1%	60.6%	57.0%	57.6%	57.9%	56.4%	60.6%	55.5%	59.6%	57.7%	56.8%	57.9%	
		Target	No target set													
MY17	% Assisted deliveries	Actual	14.7%	12.5%	13.6%	14.3%	15.3%	12.6%	13.2%	8.2%	16.2%	14.8%	9.5%	6.4%	12.6%	
		Target	No target set													
MY18	Number of Home births	Actual	2	2	4	2	4	1	3	2	5	1	2	0	28	
		Target	1	3	5	2	3	1	2	1	2	2	1	2	26	
MY19	Still Births per 1,000 Deliveries	Actual	7.46	3.92	4.24	7.14	7.33	7.91	11.95	4.17	0.00	12.40	4.72	8.37	6.62	
		Target	No target set													
MY20	% Neonates	Actual	22.7%	24.7%	30.1%	18.9%	22.3%	19.3%	21.5%	16.0%	18.4%	32.8%	31.7%	26.6%	23.6%	
		Target	No target set													

## 3rd & 4th Degree Tears

MY20	Actual number of women with a 3rd degree tear	Actual	3	3	3	4	2	4	7	3	10	4	3	4	50	
		Target	No target set													
MY21	Actual number of women with a 4th degree tear	Actual	0	0	0	1	0	0	1	0	0	1	0	0	3	
		Target	No target set													

## Postpartum Haemorrhage

MY22	Number of Vaginal deliveries that had a PPH >= 500 ML	Actual	34	25	23	34	32	18	25	12	26	17	18	20	284	
		Target	No target set													
MY23	Number of LSCS deliveries that had a PPH >= 800 ML	Actual	23	17	15	15	16	14	14	22	20	6	8	18	188	
		Target	No target set													
MY24	Number of Vaginal deliveries that had a PPH >= 2000 ML	Actual	0	0	1	1	1	1	1	1	0	2	0	0	8	
		Target	No target set													
MY25	Number of LSCS deliveries that had a PPH >= 2000 ML	Actual	0	2	1	3	1	3	3	3	1	0	3	2	22	
		Target	No target set													

## Workforce

MY26	Consultant cover hours per month	Actual	Data not available						210	212	212	240	240	240	226	
		Target	240	240	240	240	240	240	240	240	240	240	240	240	240	

## Re-Admissions Following Delivery

MY27	Number of readmissions <28 days under the care of Ealing team - Mother	Actual	7	11	4	3	6	5	7	7	8	8	4	10	80	
		Target														
MY28	Number of readmissions <28 days under the care of Ealing team - Baby	Actual	0	0	0	0	0	0	0	0	0	0	0	0	0	
		Target														

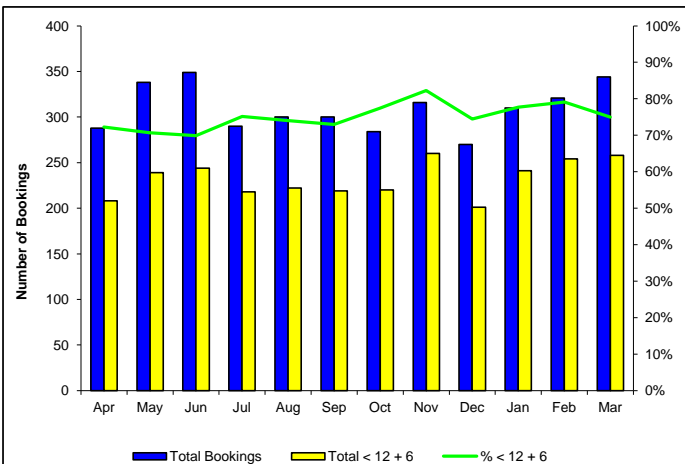
Month 12 - April 2011 to March 2012

# Maternity Performance Scorecard

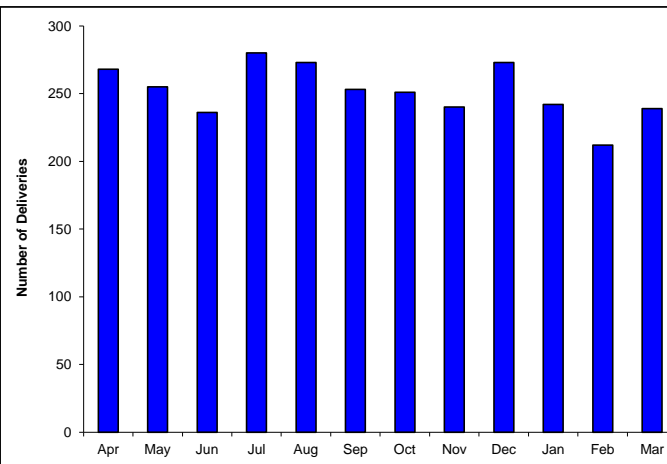
Ref	Metric		Actual												Cumulative YTD	Year end risk rating		
			Apr	May	Jun	Jul	Aug	Sep	Oct	Nov	Dec	Jan	Feb	Mar				
Patient Safety																		
MY29	Number of Serious Untoward Incidents (SUIs) reported	Actual Target	4 	1 	0 	5 	2 	2 	3 	0 	0 	1 	0 	0 	18			
MY30	Number of Neonate SUIs reported	Actual Target	2 	1 	0 	4 	1 	1 	1 	0 	1 	0 	0 	0 	11			
MY31	Number of Complaints Received	Actual Target	1 	2 	1 	0 	2 	0 	0 	2 	0 	2 	3 	1 	14			
Breast feeding																		
MY32	% Breast feeding initiated at delivery rate	Actual Target	66.8% 90%	73.7% 90%	71.1% 90%	88.2% 90%	84.6% 90%	84.5% 90%	86.0% 90%	86.6% 90%	88.3% 90%	88.4% 90%	76.8% 90%	88.3% 90%	81.9% 90%			
MY33	% exclusively breast feeding on discharge from hospital	Actual Target	85.1% 90%	85.1% 90%	90.3% 90%	87.1% 90%	87.2% 90%	88.1% 90%	87.6% 90%	85.4% 90%	86.8% 90%	85.5% 90%	88.2% 90%	89.5% 90%	87.1% 90%			
MY34	% exclusively breast feeding at 10 days	Actual Target	41.1% 37.8%	45.8% 41.4%	51.3% 46.7%	49.0% 47.1%	38.2% 48.4%	38.7% 48.2%	37.7% 48.8%	39.2% 48.7%	33.9% 49.2%	39.5% 49.2%	43.9% 49.4%	35.0% 49.5%	41.1% 47%			
Smoking Cessation																		
MY35	% of women not smoking at time of delivery	Actual Target	95.5% 90%	93.7% 90%	97.9% 90%	95.4% 90%	92.3% 90%	96.4% 90%	93.6% 90%	93.3% 90%	97.1% 90%	93.0% 90%	95.3% 90%	96.7% 90%	95.0% 90%			
Newborn Screening																		
MY36	% BCG offered	Actual Target	100.0% 100%	100.0% 100%	100.0% 100%	100.0% 100%	100.0% 100%	100.0% 100%	100.0% 100%	100.0% 100%	100.0% 100%	100.0% 100%	100.0% 100%	100.0% 100%	100.0% 100%			
MY37	% BCG uptake	Actual Target	11.6% 90%	5.9% 90%	0.0% 90%	4.3% 90%	21.6% 90%	8.7% 90%	19.1% 90%	15.8% 90%	60.5% 90%	60.5% 90%	89.2% 90%	84.3% 90%	31.8% 90%			
MY38	% Blood spot offered	Actual Target	100.0% 100%	100.0% 100%	100.0% 100%	100.0% 100%	100.0% 100%	100.0% 100%	100.0% 100%	100.0% 100%	100.0% 100%	100.0% 100%	100.0% 100%	100.0% 100%	100.0% 100%			
MY39	% Blood spot uptake	Actual Target	81.9% 95%	96.8% 95%	86.5% 95%	92.9% 95%	95.7% 95%	92.9% 95%	93.1% 95%	95.0% 95%	98.6% 95%	88.3% 95%	83.0% 95%	84.1% 95%	90.7% 95%			
MY40	% New born hearing offered (Quarterly)	Actual Target	99.6% 100%				99.7% 100%				Data not available 100%			Data not available 100%			99.6% 100%	
MY41	% New born hearing uptake (Quarterly)	Actual Target	98.4% 95%				97.9% 95%				Data not available 95%			Data not available 95%			98.2% 95%	
MY42	% New born and infant physical examination performed	Actual Target	62.0% 95%	70.2% 95%	67.8% 95%	71.1% 95%	75.9% 95%	80.6% 95%	76.1% 95%	64.9% 95%	74.0% 95%	78.1% 95%	72.2% 95%	69.6% 95%	71.9% 95%			
MY43	% timely assessment of CDH	Actual Target	Data not available 95%												N/A 95%			

Month 12 - April 2011 to March 2012

## New Antenatal Attendees

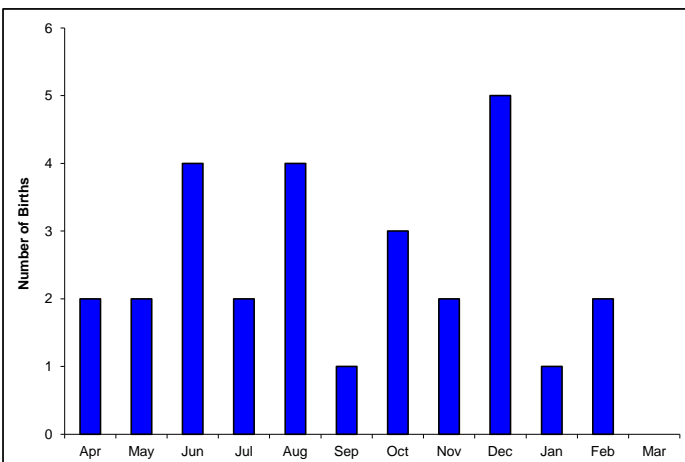


## Deliveries

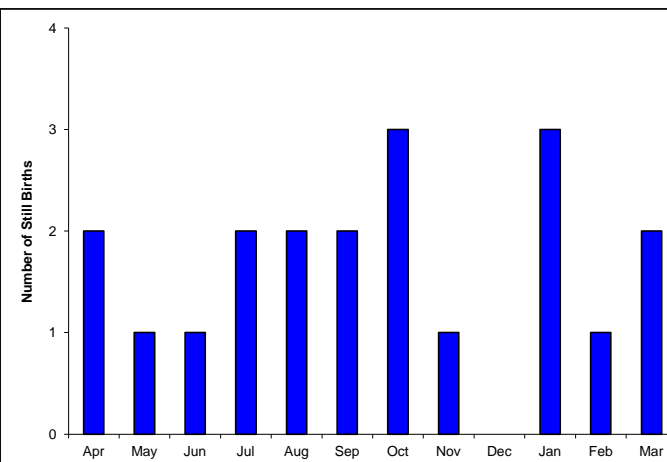


## Key Highlights:

## Home Births



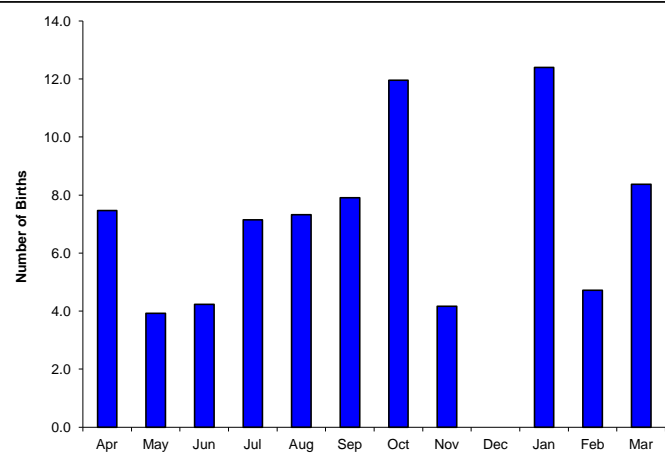
## Still Births



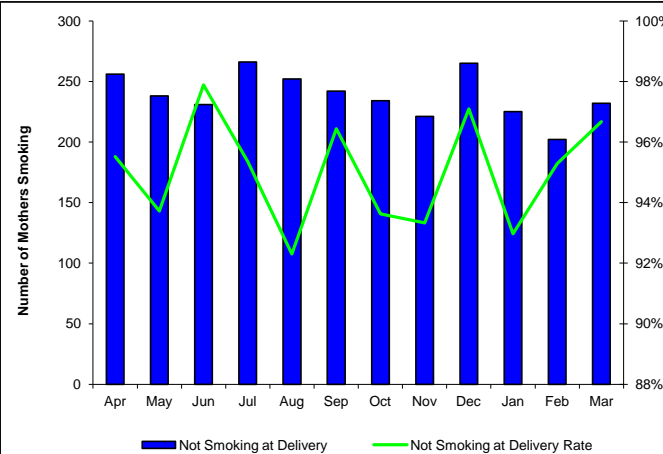
## Key Highlights:

Month 12 - April 2011 to March 2012

## Still Births per 1,000 Deliveries

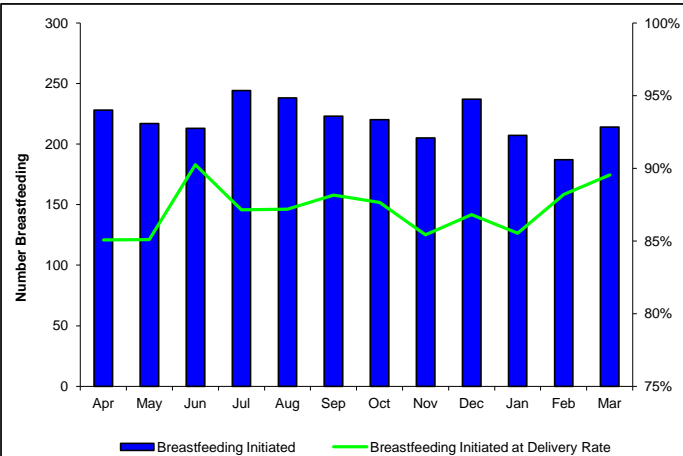


## Not Smoking at Delivery

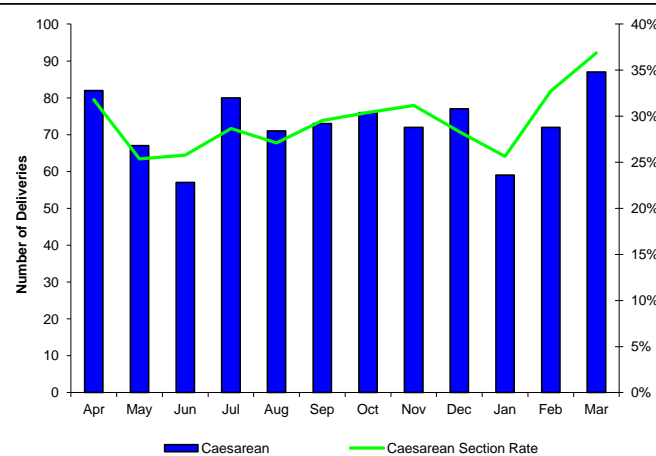


## Key Highlights:

## Breastfeeding at Discharge



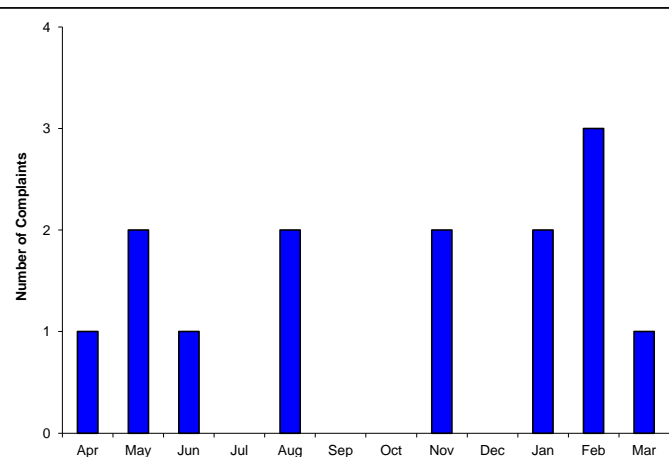
## Caesarean Deliveries



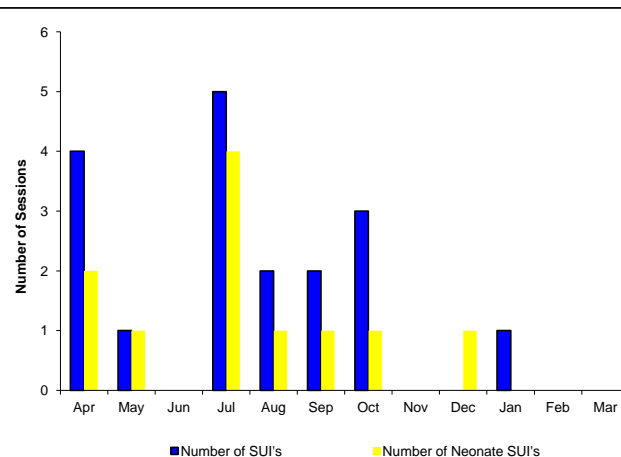
## Key Highlights:

Month 12 - April 2011 to March 2012

## Number of Complaints Received

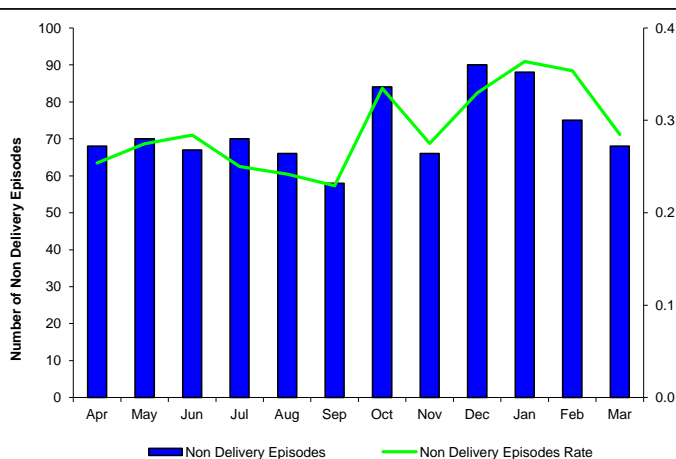


## Number of Serious Untoward Incidents

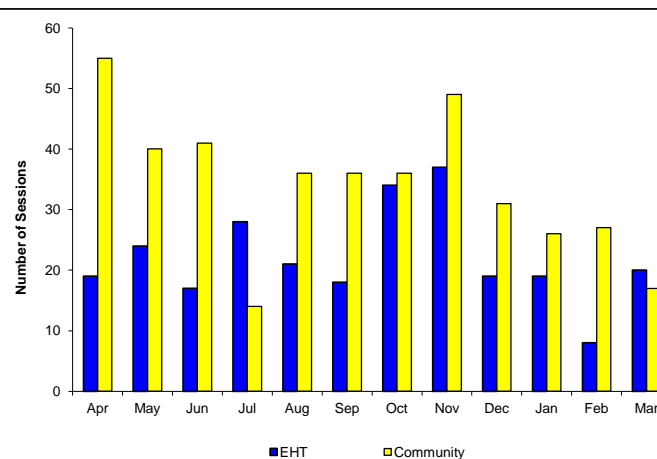


## Key Highlights:

## Non Delivery Episodes



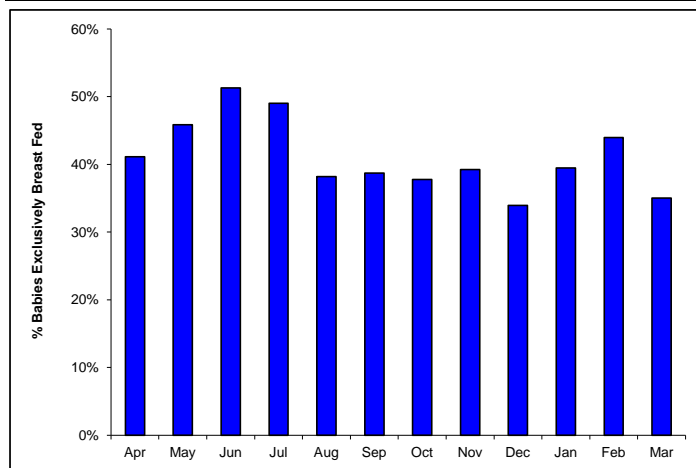
## Parent Education Classes



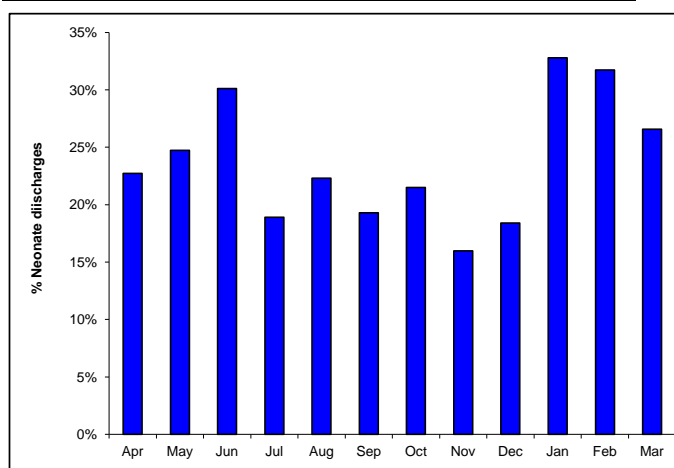
## Key Highlights:

Month 12 - April 2011 to March 2012

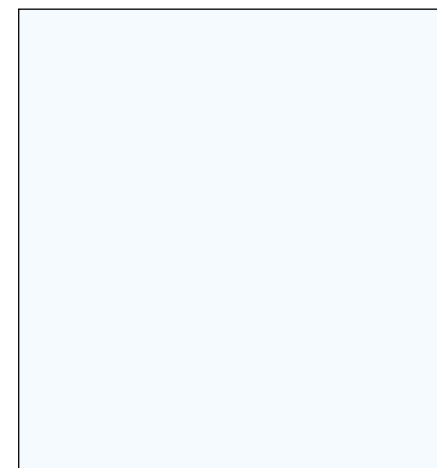
**% Women Exclusively Breast Fed at 10 days**



**% Neonate discharges**



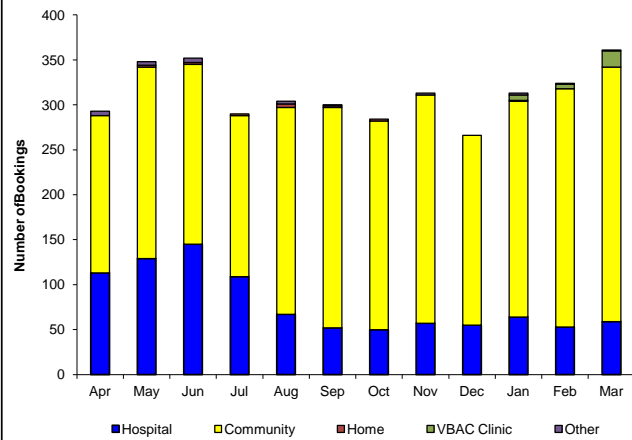
**Key Highlights:**



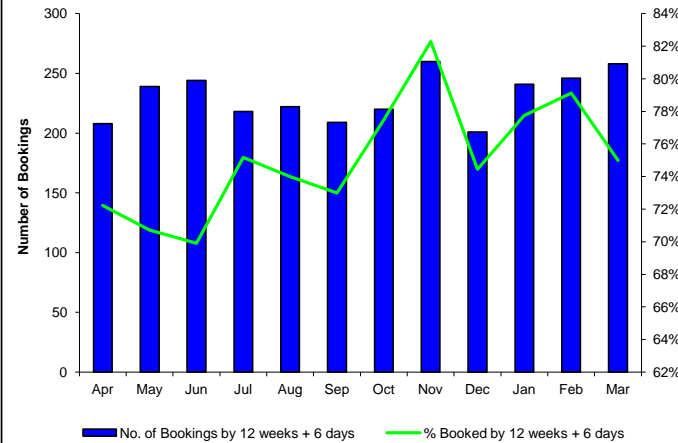
Month 12 - April 2011 to March 2012



## Total Bookings

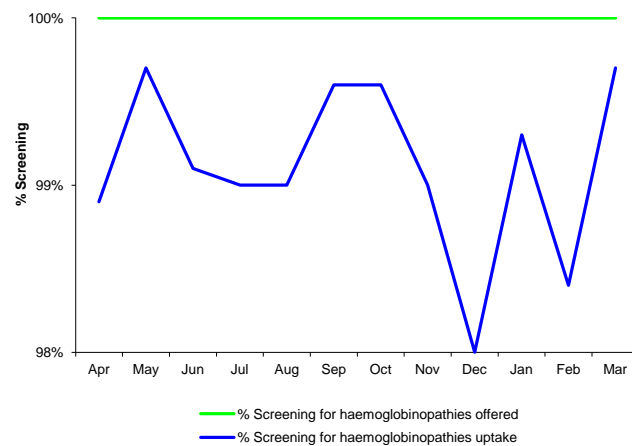


## 12-Week Assessment

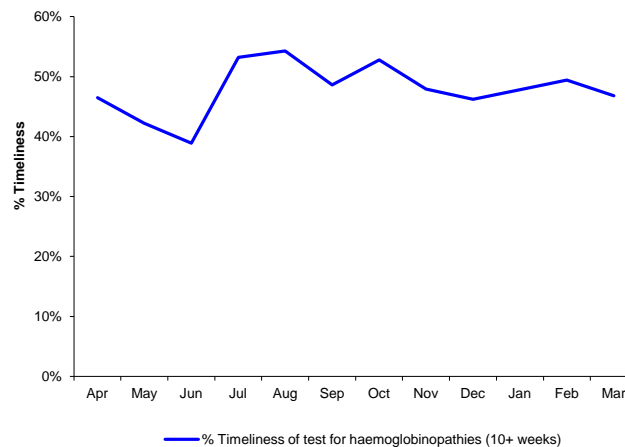


## Key Highlights:

## Antenatal Screening



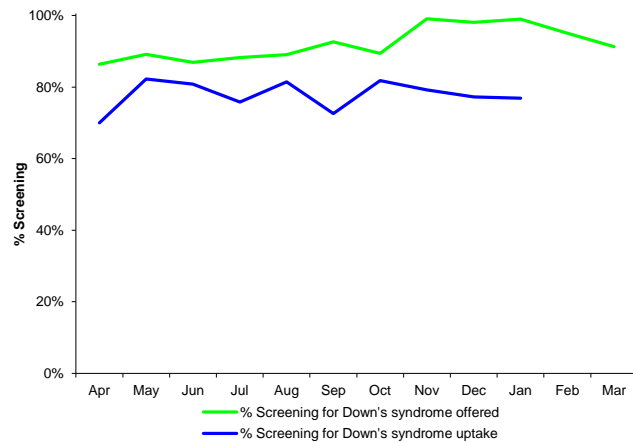
## Antenatal Screening



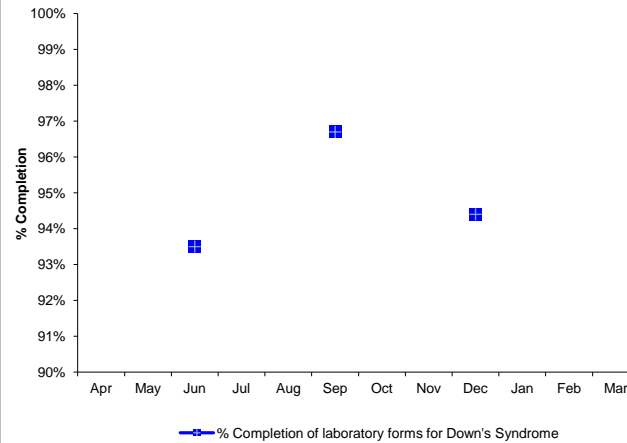
## Key Highlights:

Month 12 - April 2011 to March 2012

Antenatal Screening

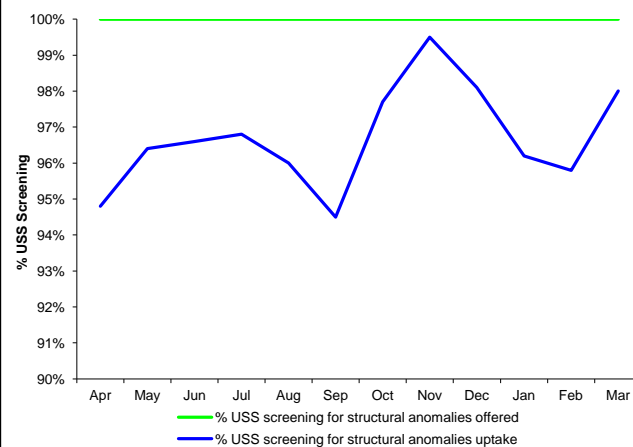


Antenatal Screening

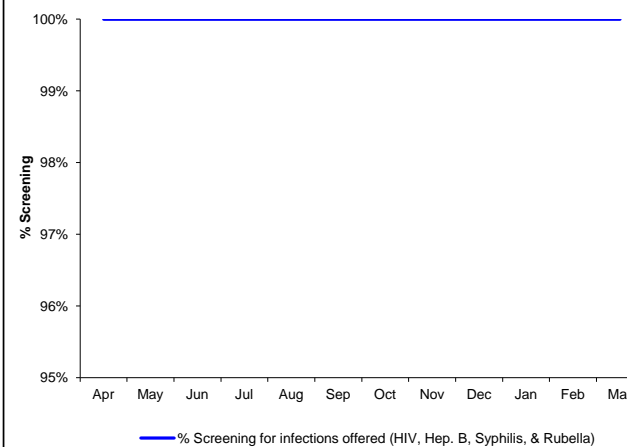


Key Highlights:

Antenatal Screening



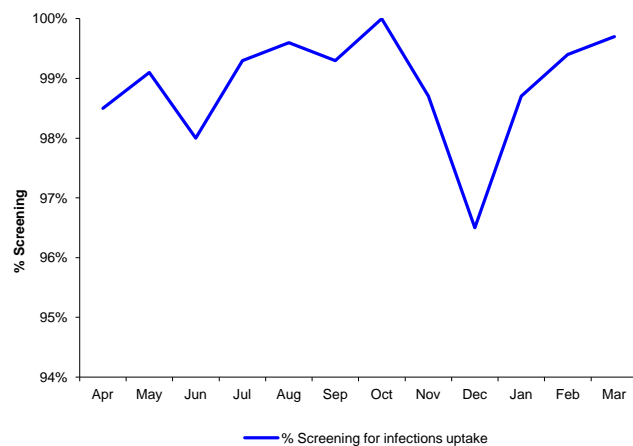
Antenatal Screening



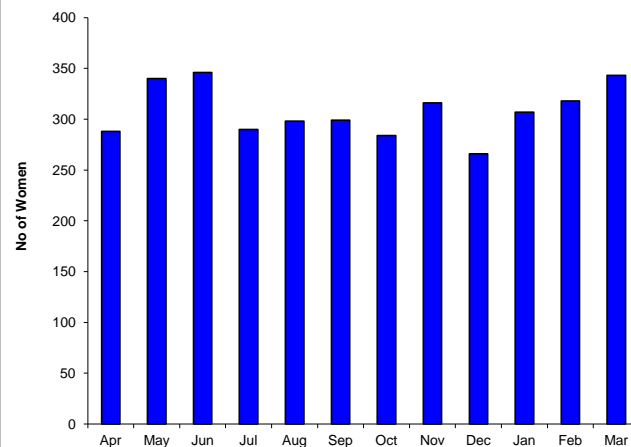
Key Highlights:

Month 12 - April 2011 to March 2012

## Antenatal Screening

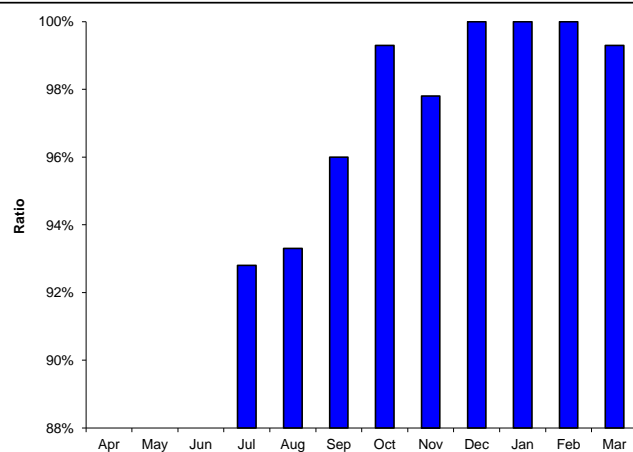


## Antenatal Education

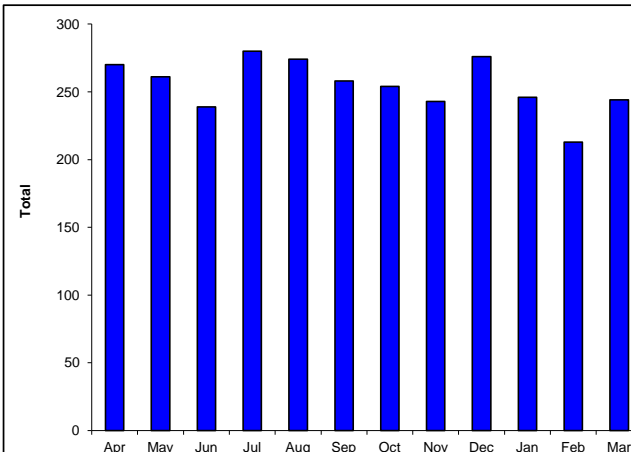


## Key Highlights:

## 1:1 Care in Labour



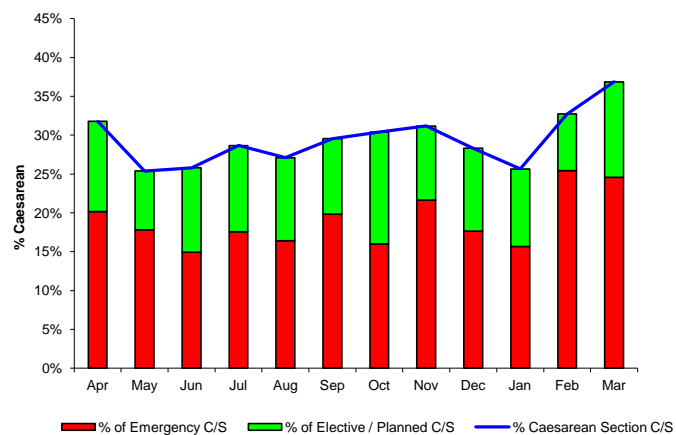
## Births



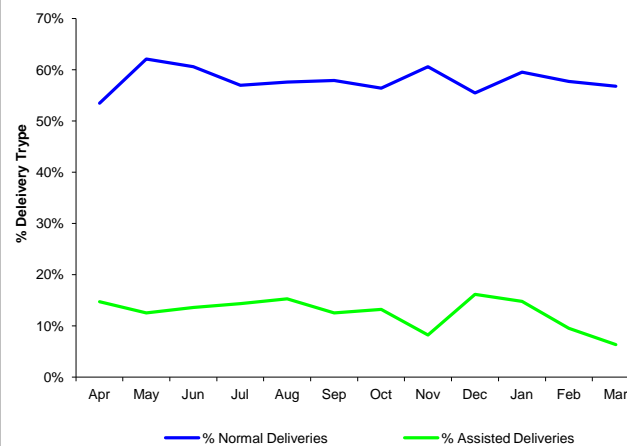
## Key Highlights:

Month 12 - April 2011 to March 2012

## Type of Birth

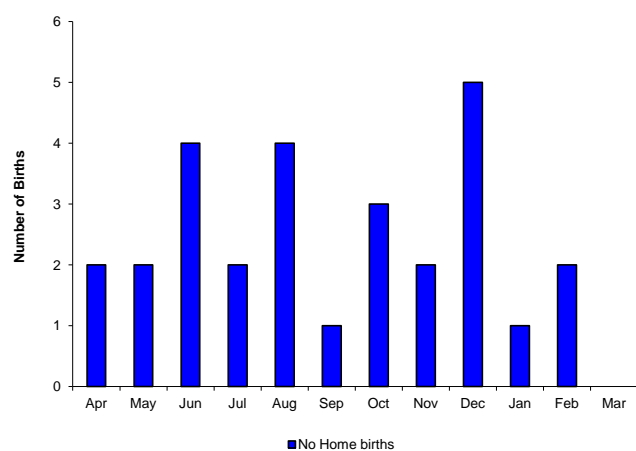


## Type of Birth

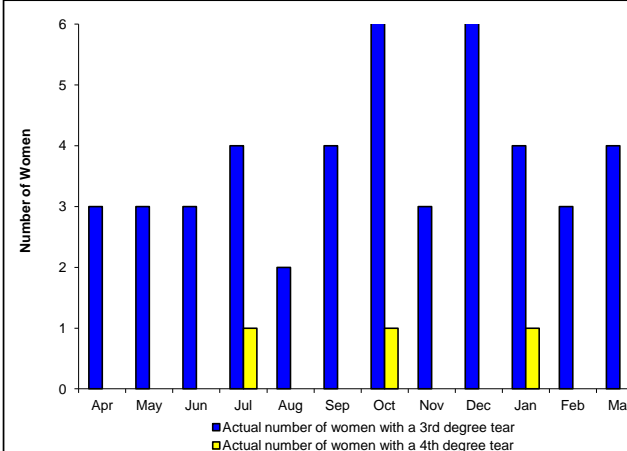


## Key Highlights:

## Type of Birth



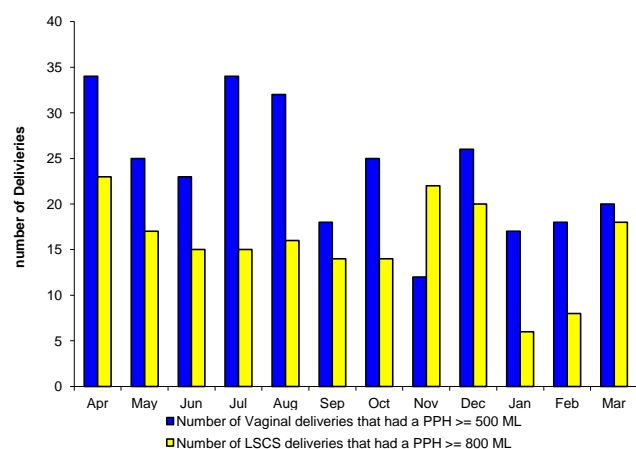
## 3rd & 4th Degree tears



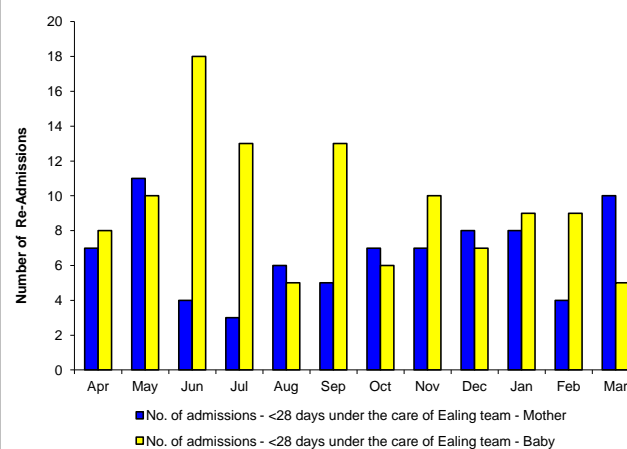
## Key Highlights:

Month 12 - April 2011 to March 2012

## Postpartum Haemorrhage

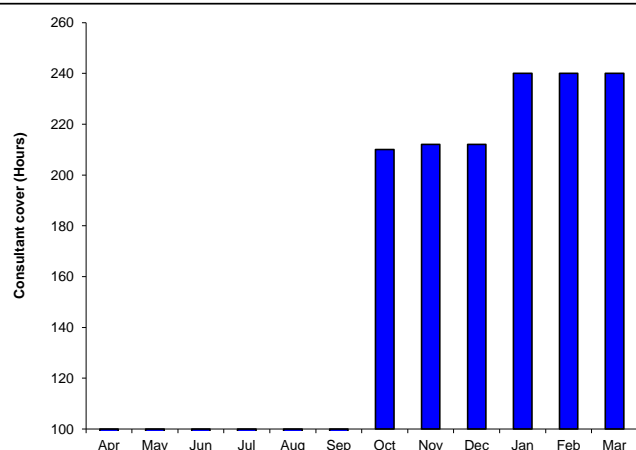


## Re-Admissions Following Delivery

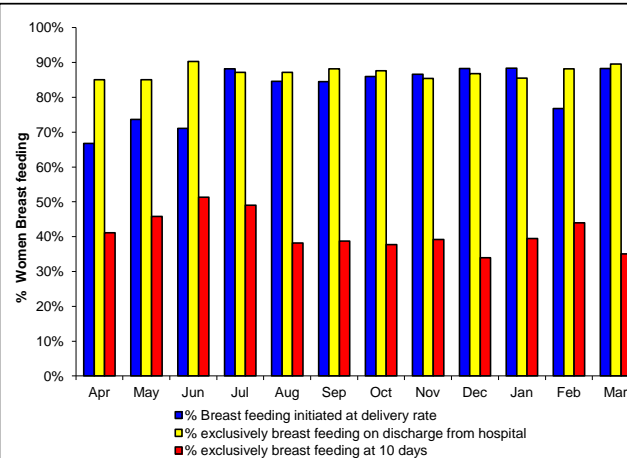


## Key Highlights:

## Consultant cover (Hours) per month



## Breastfeeding

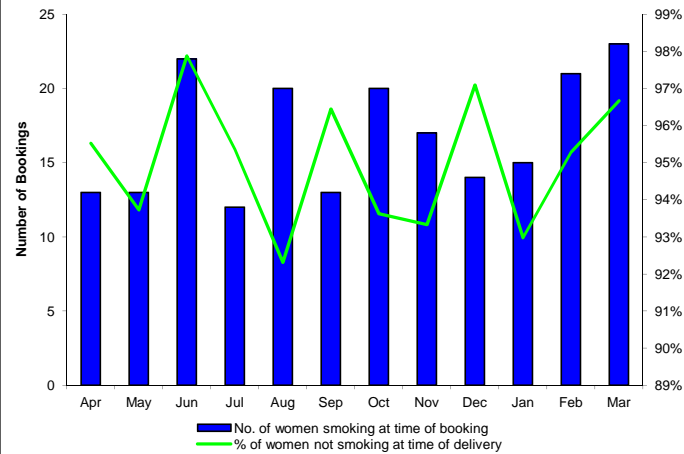


## Key Highlights:

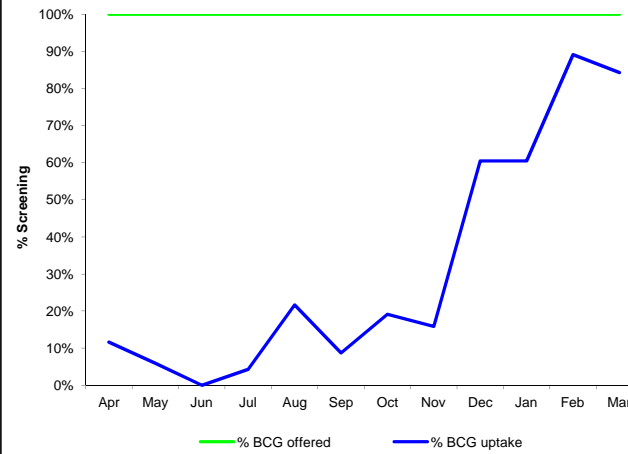
**Consultant cover (Hours) per month:**  
Weekly breakdown of consultant cover is as follows:

06.02.12	60 hours
13.02.12	60 hours
20.02.12	60 hours
27.02.12	60 hours

## Smoking Cessation

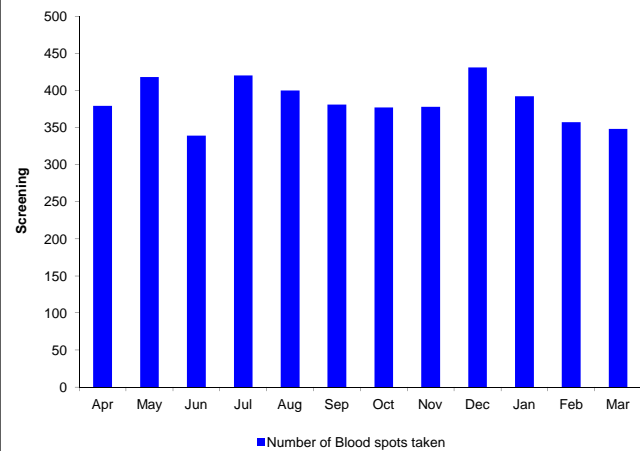


## Newborn Screening

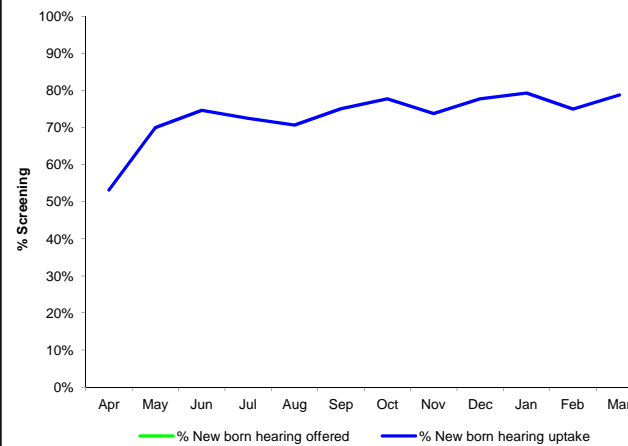


## Key Highlights:

## Newborn Screening



## Newborn Screening



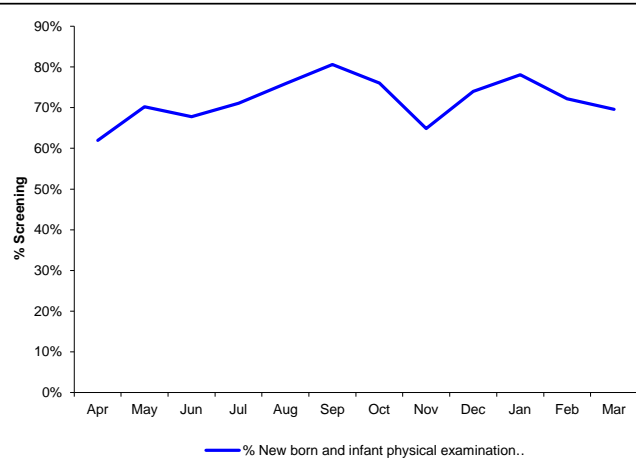
## Key Highlights:

**Newborn Screening:** Hearing Screening  
NHSP activity for quarter 2 was as follows:  
Screens offered = 99.7%

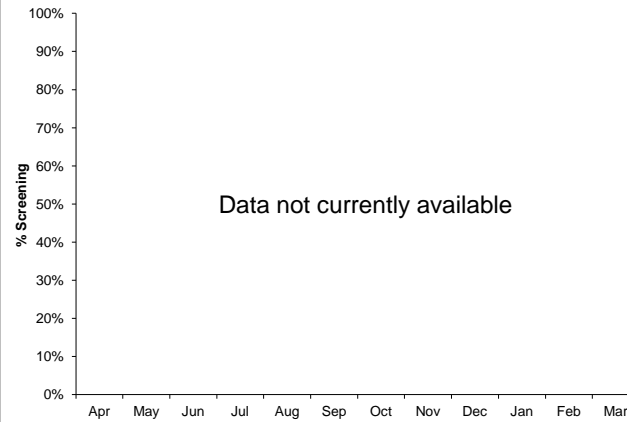
Screens completed by 4wks (Well Babies) = 97.9%

Screens completed by 4wks (NICU Babies) = 95.2%

Newborn Screening



Newborn Screening



Key Highlights:

Month 12 - April 2011 to March 2012